



Model Number

V1S-PG9-500

Male receptacle, M12/PG9, 4-pin

Features

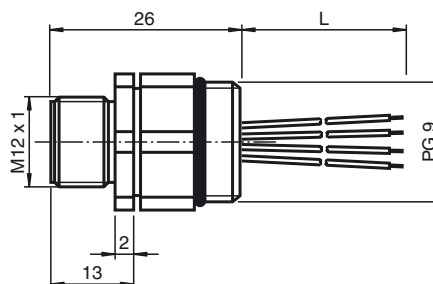
- Front/screw mounting
- Suitable for 2-, 3- and 4-wire technology

Accessories

LOCKNUT PG9 NICKEL BRASS

Nut, nickel-plated brass

Dimensions



Technical data

General specifications

Number of pins	4
Connection 1	Male connector
Construction type 1	straight
Threading 1	M12
Connection 2	cable end
UL File Number	E191152

Electrical specifications

Operating voltage	U_B	max. 250 V
Test voltage		2000 V AC
Operating current	I_B	max. 4 A
Volume resistance		< 3 m Ω
Insulation resistance		≥ 20 M Ω

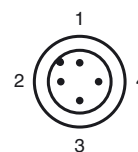
Ambient conditions

Ambient temperature	-25 ... 85 °C (-13 ... 185 °F) active
	-40 ... 85 °C (-40 ... 185 °F) fixed
Pollution degree	3

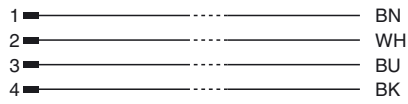
Mechanical specifications

Pin diameter	1 mm
Degree of protection	IP67
Connection	Tinned copper single leads, $\varnothing 1.2 \pm 0.07$ mm
Material	
Contacts	CuZn
Contact surface	Ni/Au
Threaded bushings	Zinc die-casting, nickel-plated
Seal	NBR
Core insulation	TPE
Cable	
Number of cores	4
Core cross-section	0.34 mm ²
Conductor construction	7 x 0.25 mm \varnothing
Length	L 500 mm
Installation	Front mounting PG9

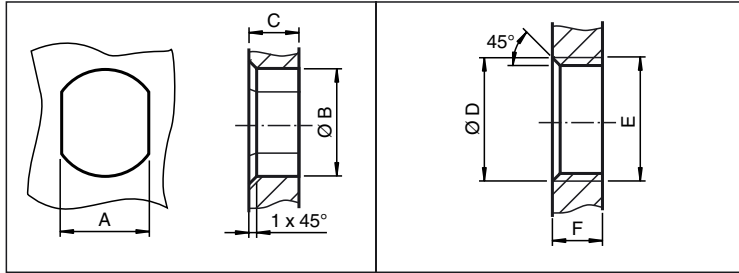
Electrical connection



Electrical connection



Installation Note



	A	B	C	D	E	F
M8	7.1 ^{+0.1}	Ø 8.2 ^{+0.1}	2 - 4 mm	-	M8x0.5	2 - 4 mm
M12	11 ^{+0.1}	Ø 12.2 ^{+0.1}	< 4 mm	-	M12x1	< 4.5 mm
M16	13.5 ^{+0.1}	Ø 16.1	< 4.5 mm	Ø 17 ^{+0.2}	M16x1.5	> 2.5 mm
M20	13.5 ^{+0.1}	Ø 20.1	-	Ø 20 ^{+0.2}	M20x1.5	< 6 mm
PG9	13.5 ^{+0.1}	Ø 15.3 ^{+0.1}	< 4.5 mm	Ø 16	PG9	> 2.5 mm
PG13.5	18.8 ^{+0.1}	Ø 20.5 ^{+0.1}	-	Ø 22 ^{±0.1}	PG13.5	-